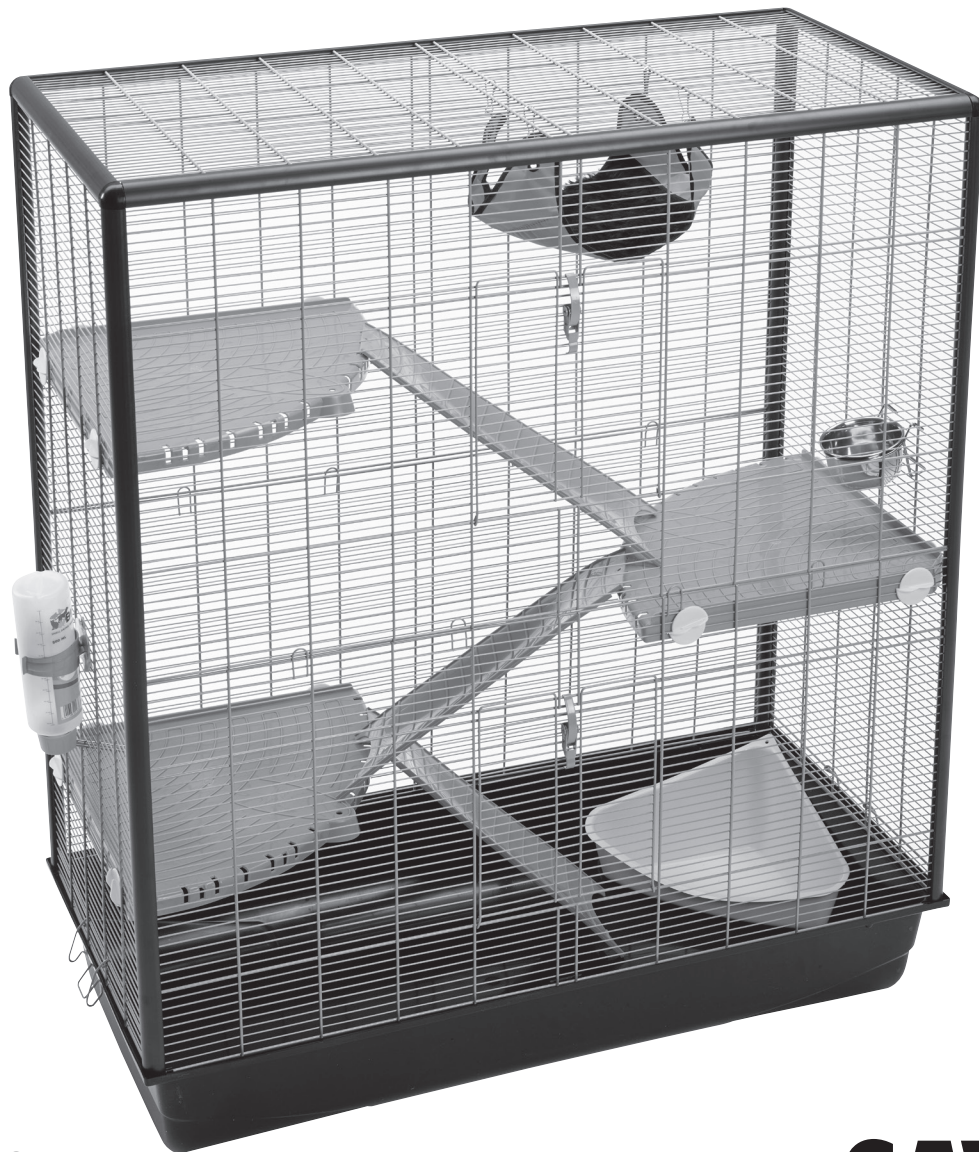




Zeno 3 Empire

collapsible small animal home

Assembly instructions for the Zeno 3 Empire
Richtlijnen voor de montage van de Zeno 3 Empire
Instructions pour le montage de la Zeno 3 Empire
Aufbau-Anleitung des Zeno 3 Empire
Instrucciones de montaje de la Zeno 3 Empire
инструкция по сборке Zeno 3 Empire



www.savic.be

Ringlaan 10 • B-8501 Heule • Belgium
Tel. +32 56 35 33 45 • Fax +32 56 35 77 30
info@savic.be
Doc.nr.: 931868

SAVIC[®]
pets' favourite





Savic would like to thank you for your purchase and confidence in our ZENO 3 EMPIRE cage. We can assure you that you have acquired a high quality small animal cage.

Due to the size of the cage, we recommend that a minimum of two people carry and assemble this cage.

Please take a few minutes to read your instructions fully to ensure the full safety benefit of your Zeno 3 Empire cage.

Check that you have all the contents as per the list. If any component parts are missing or damaged do not use your cage.

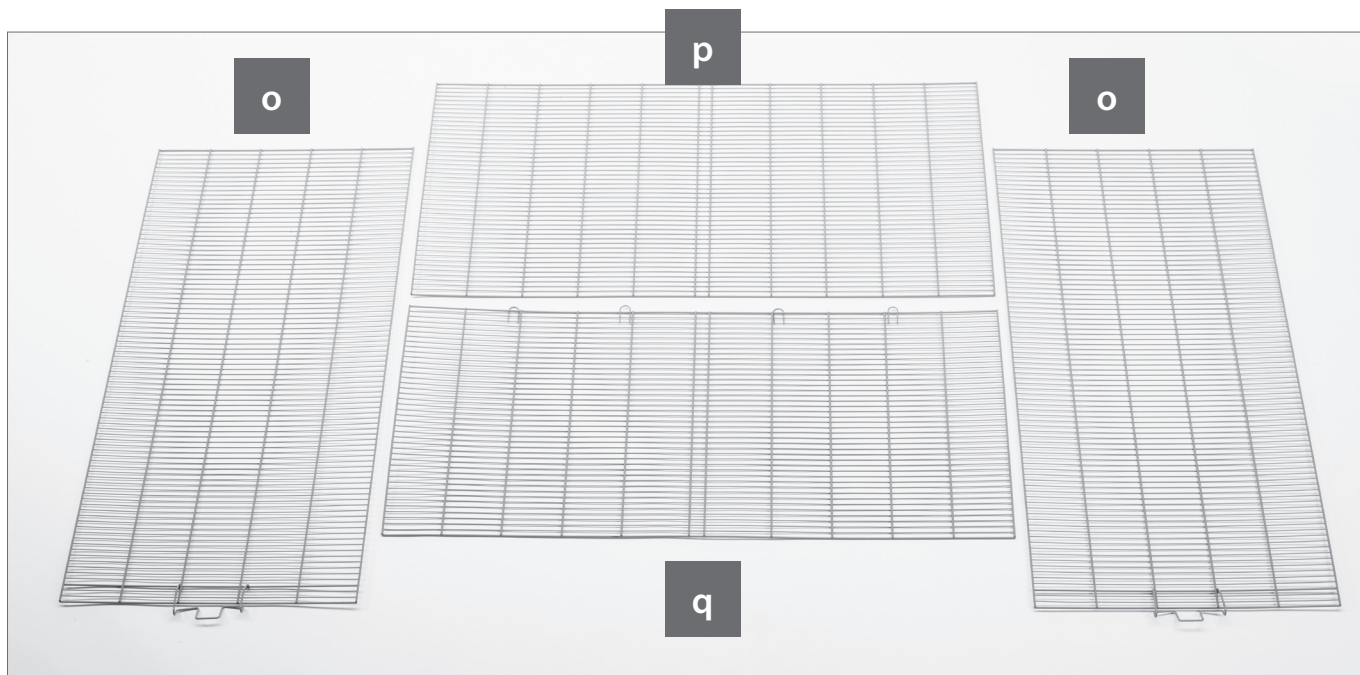
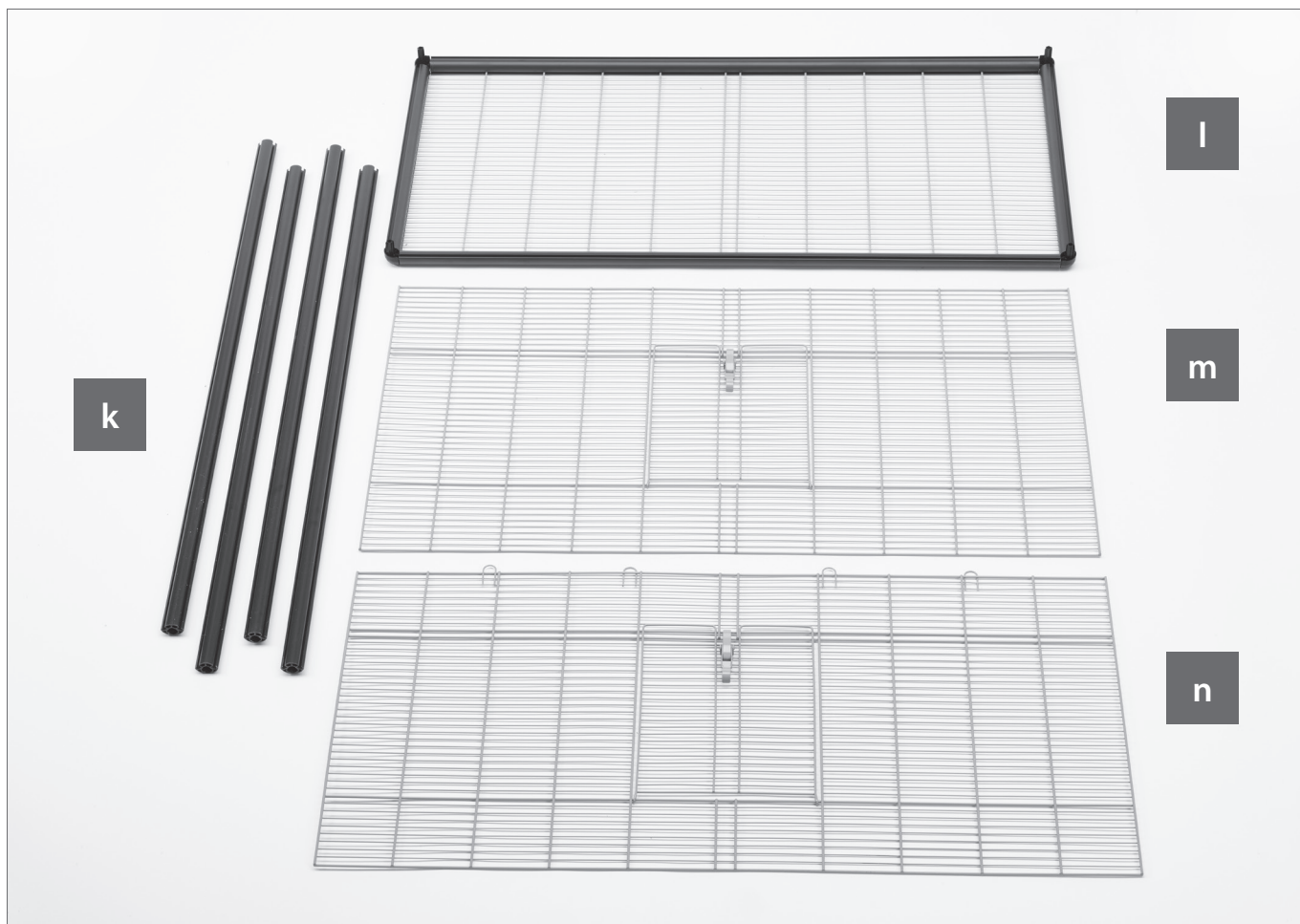
More information and instruction video on www.savic.be



The Zeno 3 Empire box contains:

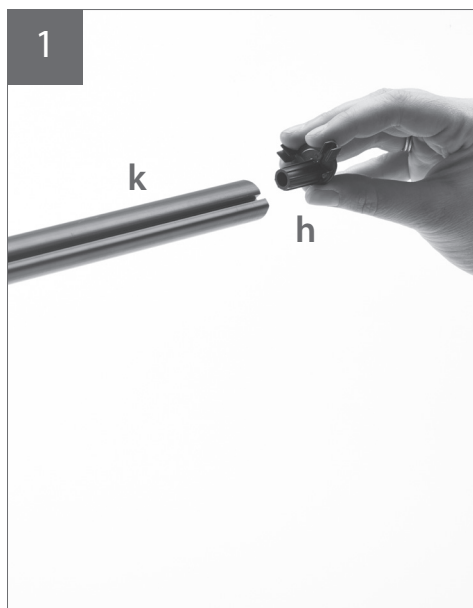
- 1 plastic bottom part (a)
- 3 rat platforms (b)
- 3 rat ladders (c)
- 1 stainless steel feeding bowl (d)
- 1 drinking bottle with holder (e)
- 12 fixings for rat platform (f +g)
- 4 corner pieces (h)
- 1 corner toilet (i)
- 1 hammock (j)
- 4 vertical profiles (k)
- 1 roof panel (l)
- 1 top front panel (m)
- 1 bottom front panel with hooks (n)
- 2 side panels with hooks (o)
- 1 top back panel (p)
- 1 bottom back panel with hooks (q)



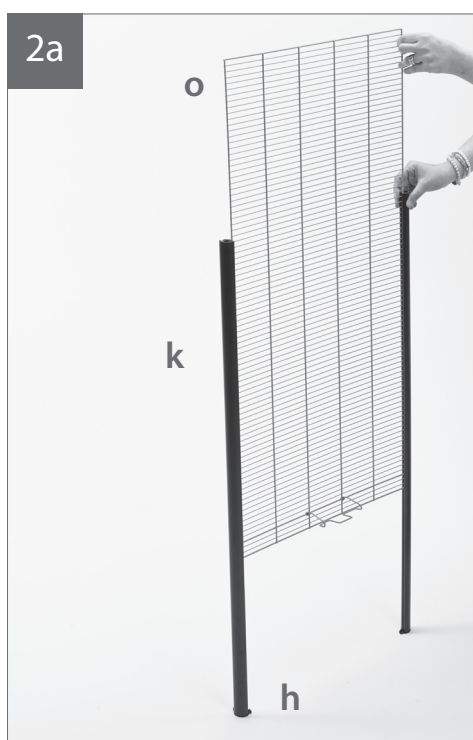


	<p>ATTENTION To avoid leakage, always fill bottle 100%.</p>
	<p>Rince spout with hot water before first use.</p>





Attach on all 4 profiles (f)
the 4 corner pieces (h).



Slide the 2 side panels (o)
in the vertical profiles (k).
Make sure that the closures
are facing outwards and
the panels are well placed
in the corner pieces (h).



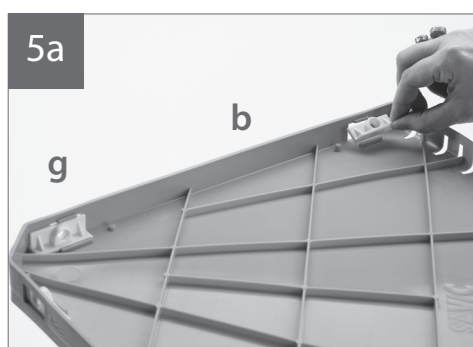
Slide the back panel with
hooks (q) in the vertical
profiles (k).
Make sure the hooks are
facing upwards and the
vertical wires of the panel
are on the outside .



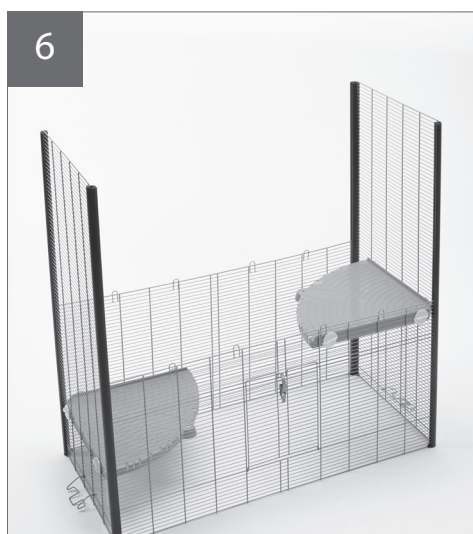
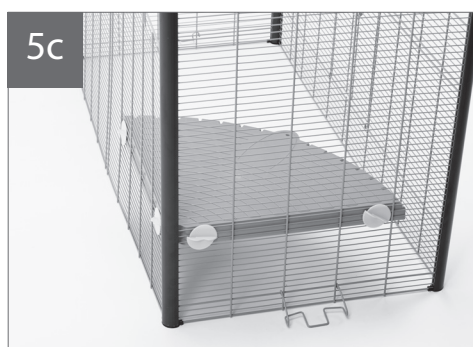


Turn the cage 180 ° and slide the front panel with hooks (n) in the profiles.

Make sure that the closure of the door is facing outwards.

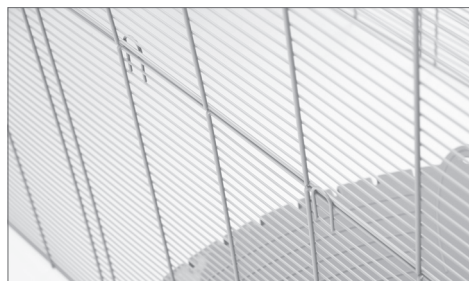
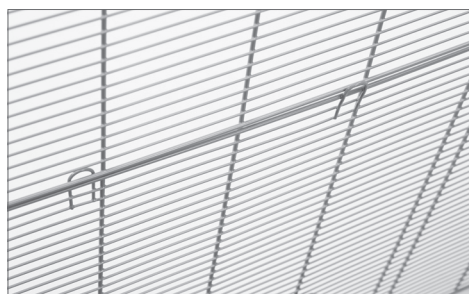
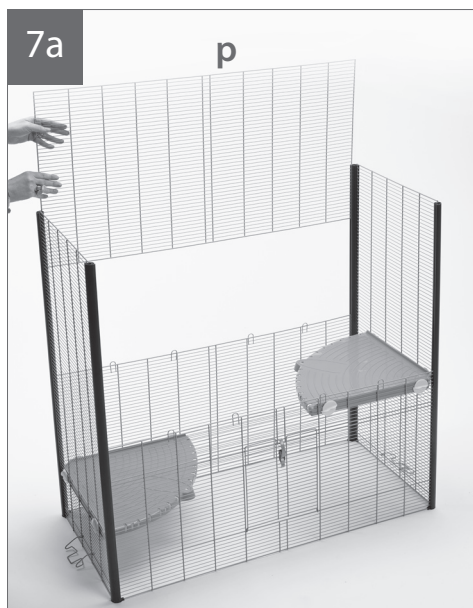


Insert 4 x g in every platform (b). Place the first platform in the corner of the side and back panel between wire 15 & 16. Do not tighten the screws (f) too strongly.

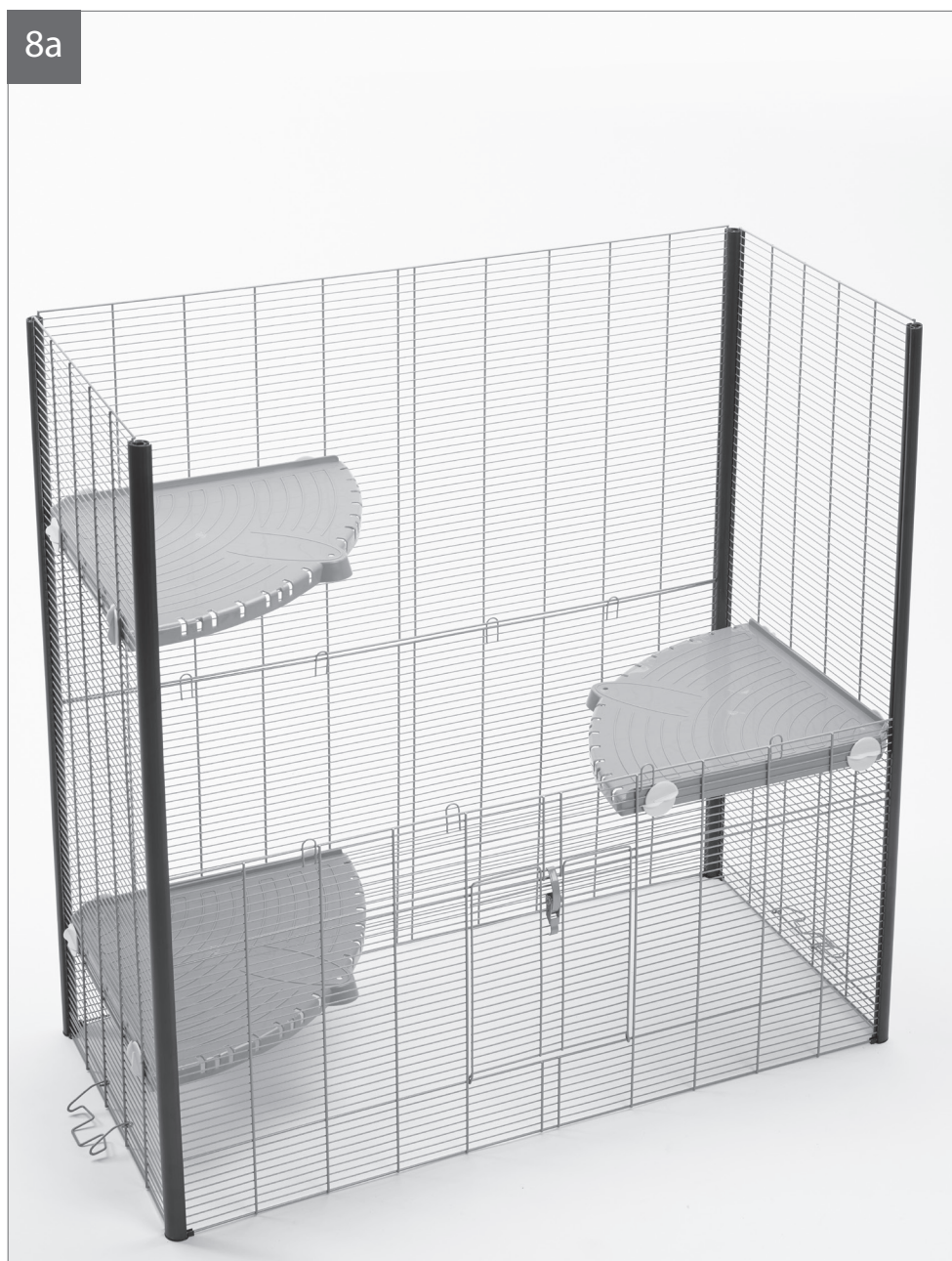


Repeat as indicated in figures 5a, 5b & 5c and place the platform in the opposite corner.



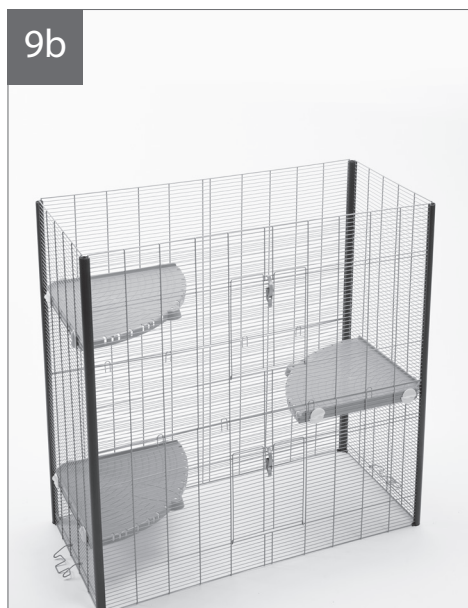
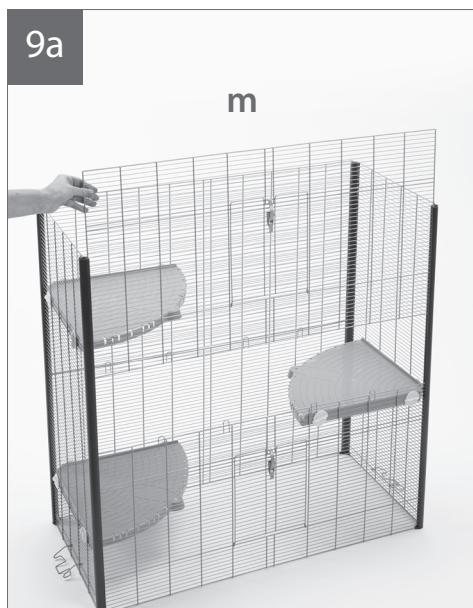


Slide the top back panel (p) into the profiles. Make sure the vertical wires are on the outside and the panels are assembled as shown.

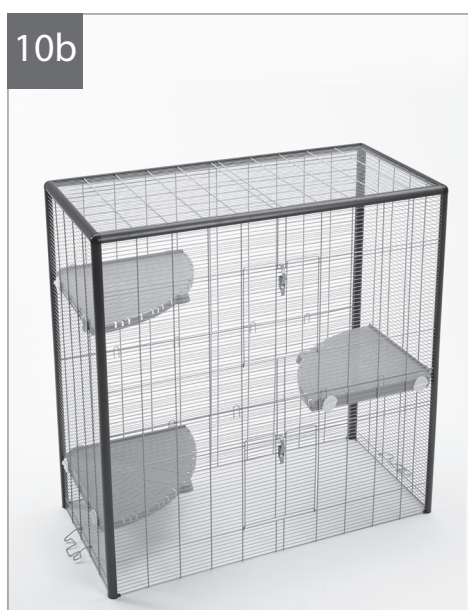
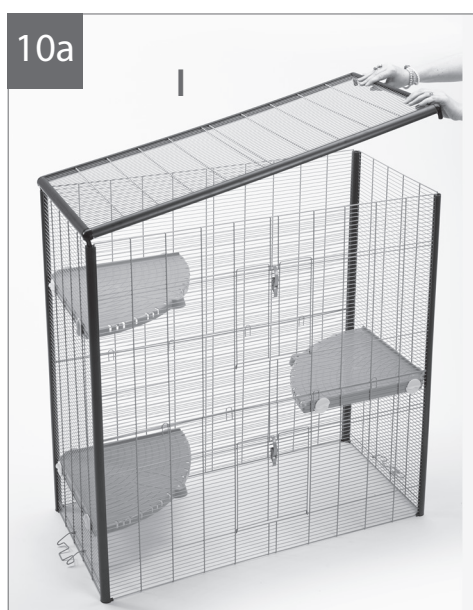


Attach the last platform as shown between wire 31 & 32, starting from the top.

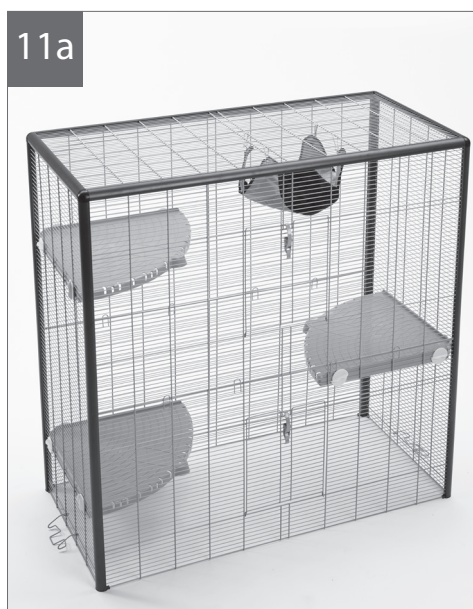




Insert the top front panel (m) into the profiles.
Again, make sure the closure of the door is on the outside.



Place the roof panel (l) on top.

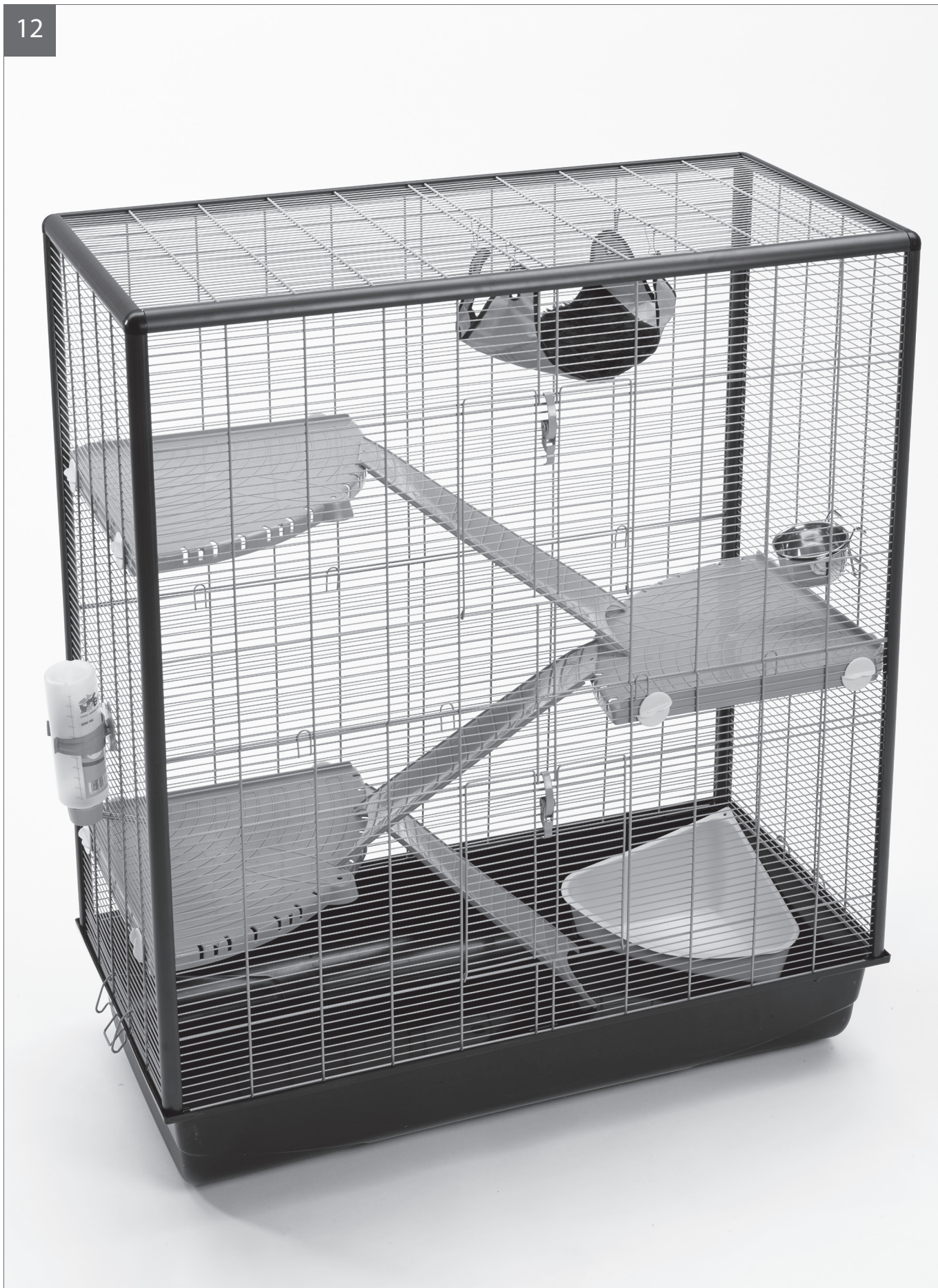


Attach the hammock (j) on the roof panel, place the corner toilet (i) in the bottom tray and connect the platforms with the ladder (c).





12



Finally, install the drinking bottle (e) and the feeding bowl (d) and your cage is now ready for use.

